



© 2016 AFCl



Amphenol  
FCI



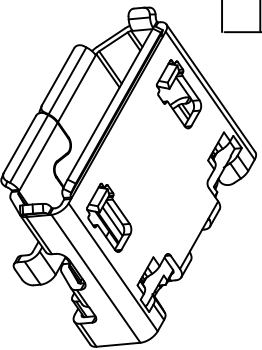
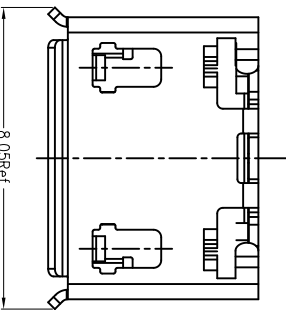
31



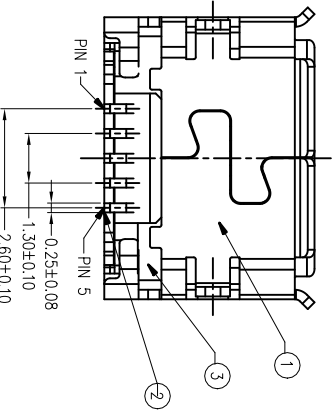
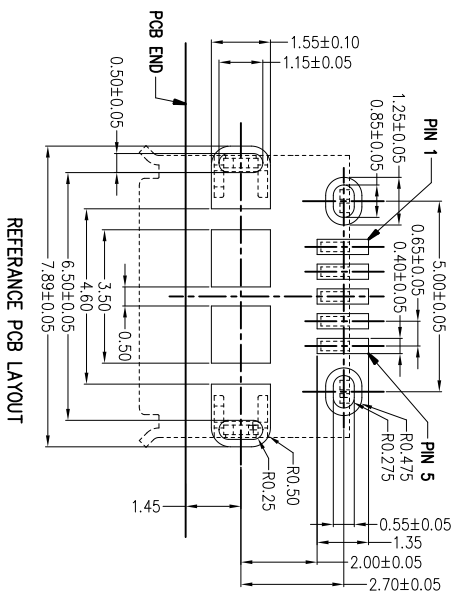
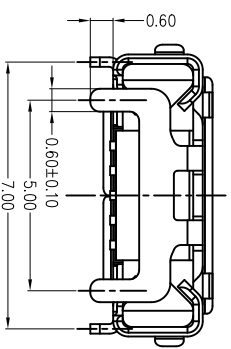
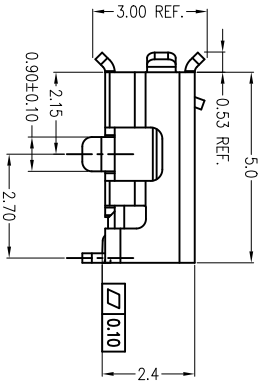
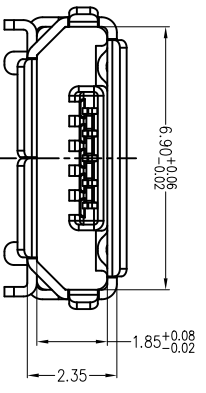
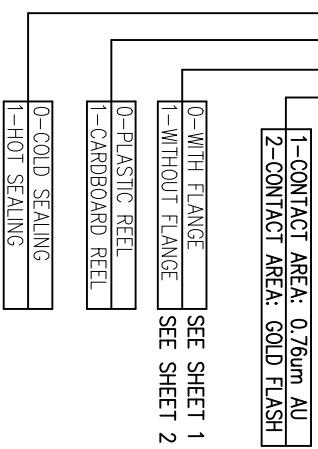
4

PART NUMBER  
10118194-0X0XLF

Item	Title	Q'TY
1	Shell	1
2	Terminal	5
3	Insert/Molding	1



PRODUCT NUMBER DESCRIPTION  
10118194- X X X X L F



tr	ecn	no	dr	date	surface	tolerance	projection	product family
A	B	C	D	eng	chr	eng	chr	type
LS	10/21/11	ASME Y14.5	ASME Y14.5	MM	HP_L_511	MICRO USB B TYPE RECEPTACLE		
LS	3/11/16	ASME Y14.5	ASME Y14.5	MM				
LQ	9/29/16	ASME Y14.5	ASME Y14.5	MM				
LZ	05/16/17	ASME Y14.5	ASME Y14.5	MM				
<p>scale: 1:1</p> <p>dwg no 10118194 sheet 1 of 2 size A4</p>								
<p>Amphenol FCI</p>								
<p>Product Customer Drawing</p>								

form: A4mmXlc-2016-02-24

1

2

3

4

B

A

B

A

5



© 2016 AF CI

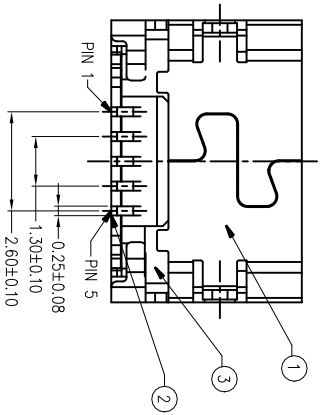
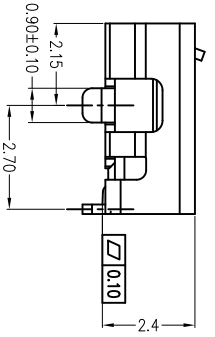
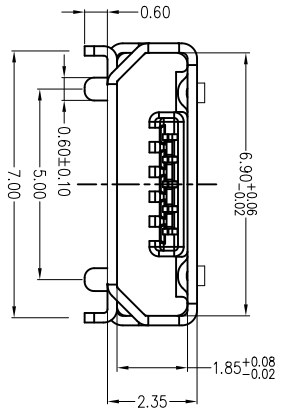
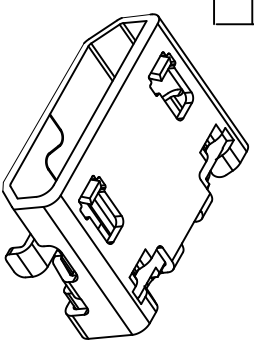
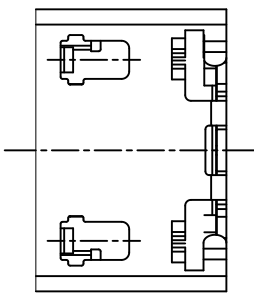


Amphenol  
FCI

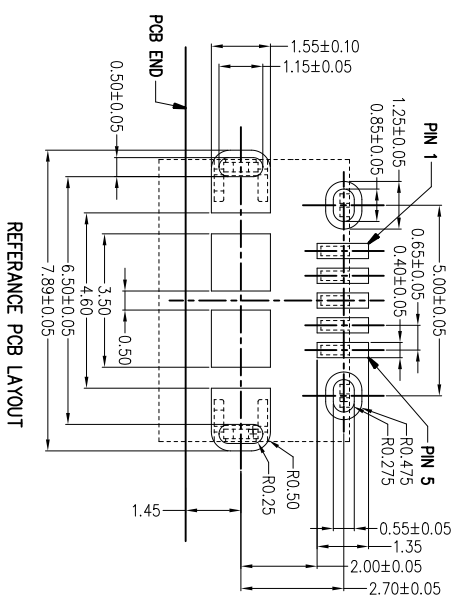


PART NUMBER  
10118194-0X1XLF

Item	Title	Q'TY
1	Shell	1
2	Terminal	5
3	InsertMolding	1



- NOTES:
- MATERIAL:  
HOUSING: HIGH THERMOPLASTIC RESIN, UL94V-0, COLOR: BLACK  
TERMINAL: COPPER ALLOY  
SHELL: STAINLESS WITH FLANGE OR WITHOUT FLANGE
  - FINISH:  
CONTACT AREA: SEE PRODUCT MEMBER DESCRIPTION  
CONTACT SOLDER AREA: GOLD FLASH  
SHELL: MATTE TIN PLATED
- TYPE  
UNDER NICKEL PLATED ALL OVER.  
PRODUCT SPECIFICATION: GS-12-64I.  
PACKAGING SPECIFICATION: GS-14-2180.  
THE "LF" MEANS FOR LEAD FREE AND CAN WITHSTAND EXPOSE TO 260°C PEAK TEMPERATURE FOR 10 SECONDS IN IR REFLOW PROCESS.



1 | 2

3 |

4

A

B

form: A4mmXlc-2016-02-24

1

2

3

4

mat'l. code	surface	tolerance	projection	product family
	ASME Y14.3	ASME Y14.5		HPL_511
tr	ecn no	dr	date	
D				
	tolerances unless otherwise specified			
	angle	ASD	X40.38	
		E	.XX±0.25	
	X.F.2		.XXX±0.10	
	dr	JASON_JSU	05/21/11	
	eng	JASON_JSU	05/21/11	
	chr	JASON_JSU	05/21/11	
	dpdp	GARY_HSEH	05/21/11	
sheet	revision	D		
index	sheet	2		

5

B