

Electrical & Mechanical data

IP rating:IP67

Contacts resistance:≤ 5 mΩ

Insulation resistance:≥100 MΩ

Orientation: Soldering,Rear lock

Over mold/ Shell:Metal shell

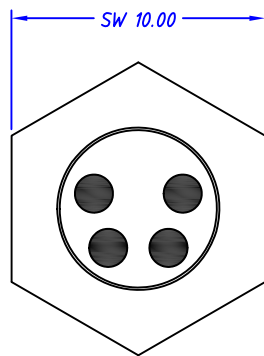
Connector contacts:Brass with gold plated

Coupling nut/screw:Brass with nickel plated screw

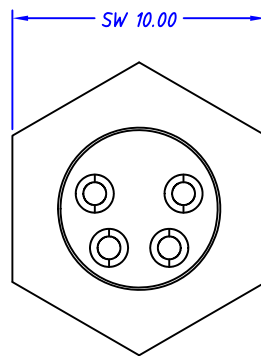
Insert/ Housing: PA66 + GF

Sealing:O-ring

Temperature Range:-25°C ~ + 90°C



Front view



Back view

	3 Pin	4 Pin
Rated current	3A	4A
Rated voltage	60V	30V

ANGLE TOLERANCE		Description:	
X. ±5°		Soldering connector,Panel mount, Rear lock, Automation technology, M12,Male	
	PROJECTION		
GENERAL TOLERANCE		UNITS	mm
X. ±0.60	SHEET SIZE	A4	
.X ±0.38	Draw:	Daniel	2020-12-01
.XX ±0.25	Check:	Daniel	2020-12-01



NingBo KLS ELECTRONIC CO.,L TD.