

MODEL	ROTARY SWITCH SPECIFICATION	SPEC NO:	
SR10		DATE:	2016.04.14
		PAGE:	1 OF 1

1. General specification

1.1 Operating temperature range -30 ~ +80 °C (normal humidity normal press).

1.2 Storage temperature range -40 ~ +85 °C (normal humidity normal press).

1.3 Test conditions

1.3.1 Ambient temperature 5°C~30°C

1.3.2 Relative humidity 25% to 85%

1.3.3 Air pressure 86 Kpa~106 Kpa

1.4 Appearance, Structure and Dimension

1.4.1 Appearance There should be no defects that affect the serviceability of product

1.4.2 Structure and Dimension Style and dimension: Shall conform to the assemble drawings

1.5 Switch Rating: DC 16V 0.1A



2. Mechanical characteristics

Item	Test Condition	Requirements
2.1	Rotation Angle Axis fixed in the regulations on the point of view, the starting position of a band aimed at zero-scale rotation	Angle 30 ± 3 ° mm
2.2	Operation torque Fixed product, fastening with a torque meter on the shaft counter-clockwise in the end. The pointer to zero, in clockwise rotation in the end	Power 300 ± 150 gf.cm
2.3	Stop strength Fixed product with a torque meter shaft rotation force applied 5 kgf	Without excessive play or poor contact
2.4	Staking of terminals Terminal end in all directions without the force applied 400 g	1 minute terminal no loss, no base damage
2.5	Bushing nut tightening strength Fixed product, set in the nuts with a torque meter on the power of rotation applied 6kgf	No-slip sleeve silk thread, deformation
2.6	Shaft push pull Fixed product, with the push and pull axial force dynamometer is 6kgf.cm 1 Minute	Without excessive play or poor contact
2.7	Switch type	pole position

3. Electrical characteristics

3.1	Contact Resistance Rating: DC 5V Current: 10±2 mA	50mΩ or less
3.2	Insulation resistance Measurements shall be made following application of DC 100V potential across terminals and across terminals and frame for one minute.	100MΩ or more
3.3	Dielectric strength AC 100V (50~60Hz) shall be applied across terminals and across terminals and frame for one minute.	There shall be no breakdown.

4. Environmental resistance.

4.1	Resistance to low temperatures stored on -20 ± 2 °C after 96 hours in the refrigerator, in the standard atmosphere for 1 hour, then measured in 1 hour	Should meet the requirements of 3.1、3.2 and 3.3.
4.2	Dry heat On 85 ± 2 °C storage temperature tank after 96 hours, in the standard atmosphere for 1 hour, then measured in 1 hour	Should meet the requirements of 3.1、3.2 and 3.3.
4.3	Constant hot and humid Placed in the temperature of the primary is 40 ± 2 °C, relative humidity of 90-95% of the environment, 96 hours and then placed in a standard atmosphere for 1 hour, 1 hour for the next measurement	Contact resistance in the following 200mΩ Insulation resistance of 10 megohms the following Dielectric breakdown and should be no arc flash phenomena

5. Endurance.

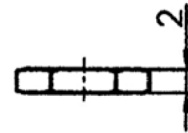
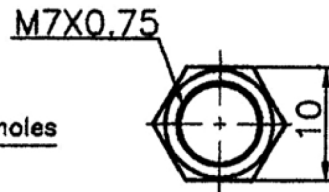
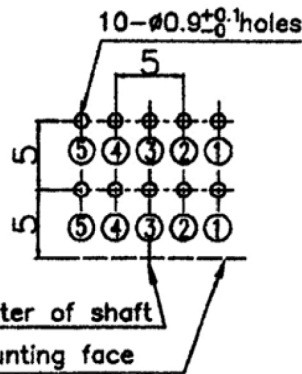
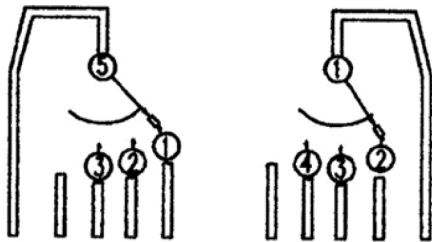
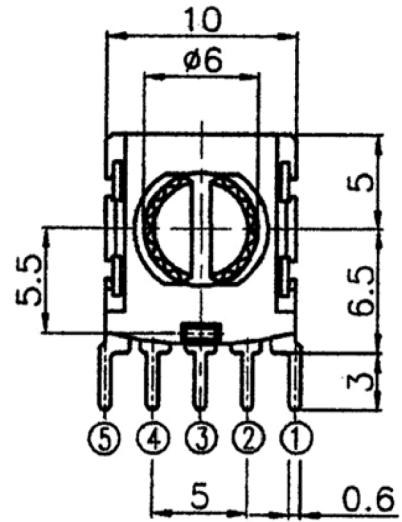
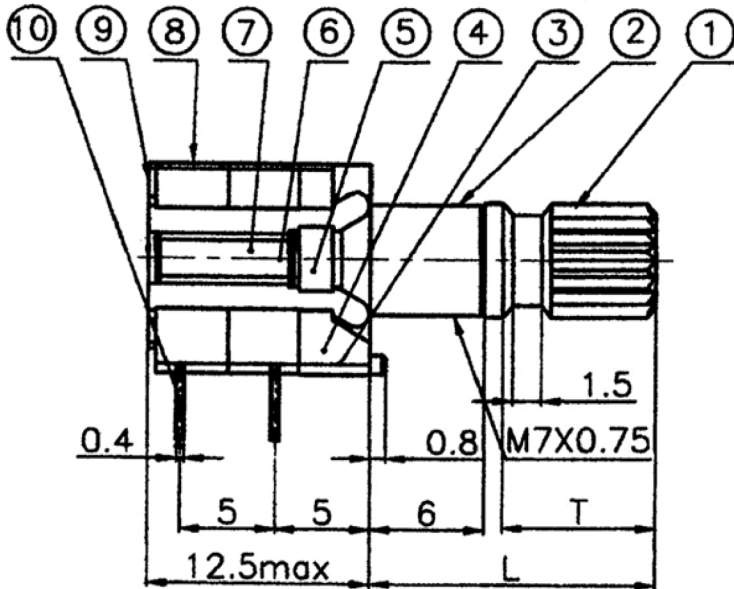
5.1	Life test Without load Increase the load life test, rotation speed of 30 beats / min (back and forth 1 back 1 count), 10,000 ± 200 turns the total rotation	The following 200 milliohms contact resistance
-----	--	--

6. Soldering conditions.

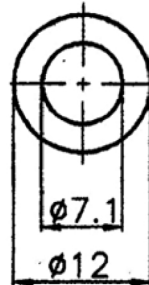
6.1	Hand soldering Please practice according to below conditions: (1) Soldering temperature : 350°C Max (2) Continuous soldering time: 3 s Max (3) Capacity of soldering iron : 20 w Max	There shall not be deforming in appearance. Should meet the requirements of 3.1.
-----	--	---

△				APPROVED	REVIEWED	PREPARED
△						
△						

Ninigi



SPECIFICATION



Rating DC 16 0.1A
 Contact resistance 50mΩ max
 Rotational torque 200±100gf.cm
 Operating life 10K cycle

P.C.B MOUNTING HOLE DETAIL

12	W-7	Washer	1	Steel t=0.4	
11	N-7	Nut	1	Steel t=2	
10	SR1005	Terminal Lug	5	Brass t=0.4	Silver Plating
9	SR1022	Bracket Plate	1	SPC t=0.4	Tin Plating
8	SR1011	Base	2	PBT-30%FB	No Plating
7	SR1008-4	Block	1	POM	No Plating
6	SR1008	Contact Plate	2	Nickel silver t=0.1	No Plating
5	SR1030-3	Lock Washer	1	Spc t=1.2	No Plating
4	SR1027	Steel Ball	1	Steel	No Plating
3	SR1015	Spring Piece	1	Phosphor-bronze t=0.3	No Plating
2	SR1002	Bushing	1	Zinc Alloy	No Plating
1	SR1001- KA	Shaft	1	Aluminum	No Plating

NO	MODEL	L	T
	15KA	15	8
✓	20KA	20	13

▲			
▲			
▲	Aug.08'13	尺寸修改, 图面重绘	李东冠

NO	Part No	Description	QTY	Material	Finishing	MODEL	SR10-2-3-20KA(G).	B
TOLERANCES		DIMENSION	SCALE	DRAWING BY	CHECKED BY	APPROVED BY	DRAWING NO.	
less than 10	±0.3	m/m	/				SR10-003	
above 10-30	±0.5							
above 30-100	±1							
angular dimension	±5'							Switch\SR10\Spec